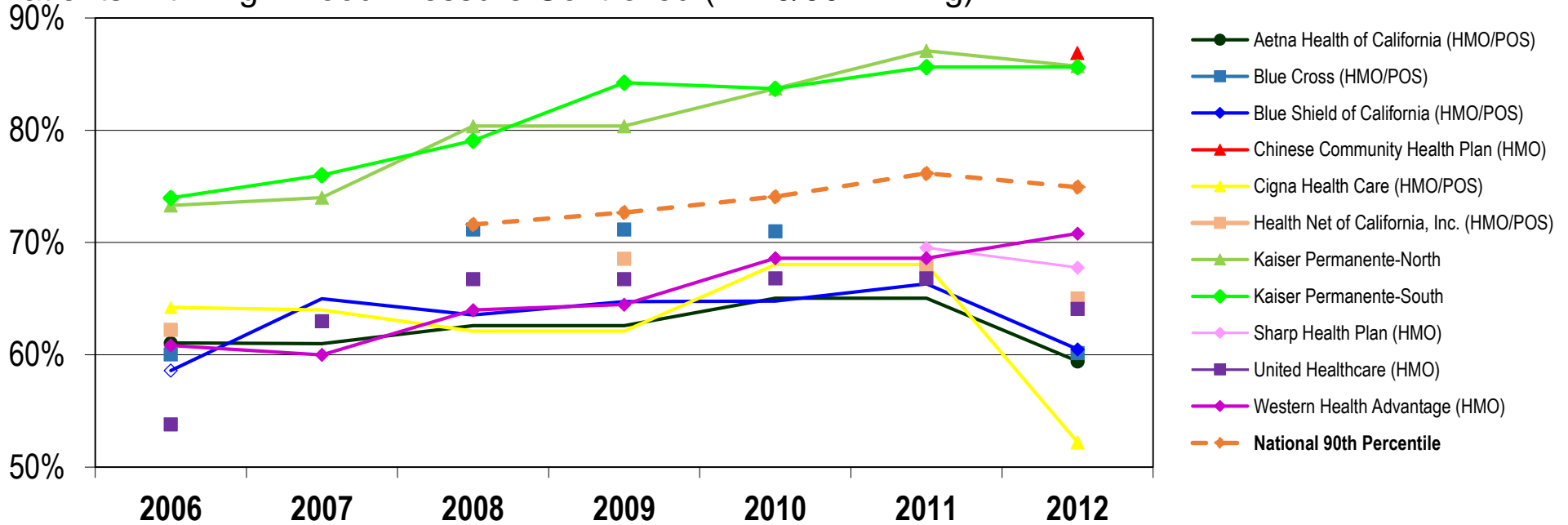


Right Care Initiative: Key Quality Indicators for Cardiovascular Prevention Among California Health Plans

Trend analysis provided by the UC Berkeley School of Public Health Right Care research team, October 2013



Patients with High Blood Pressure Controlled (<140/90 mm Hg)



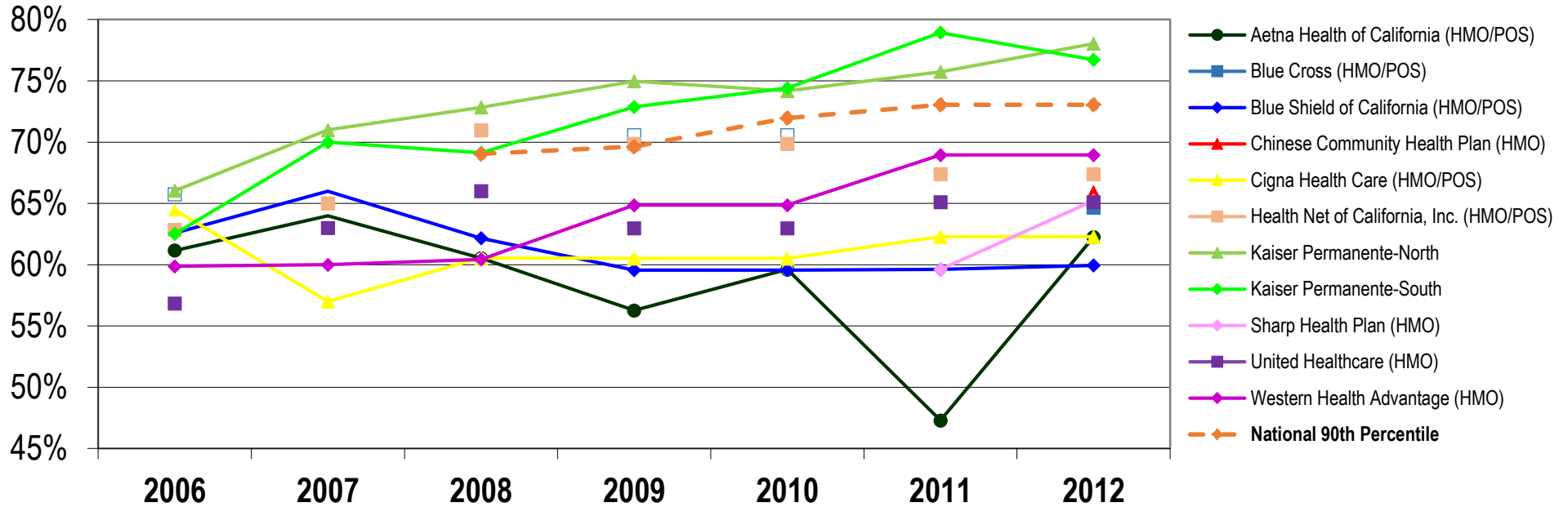
Blood Pressure Controlled (<140/90) of Previously-Diagnosed Hypertensive Patients Among CA Health Plans

	2006	2007	2008	2009	2010	2011	2012	Change
Aetna Health of California (HMO/POS)	61.06%	61.00%	62.59%	62.59%	65.04%	65.04%	59.43%	-1.63%
Blue Cross (HMO/POS)	60.04%	61.00%	71.16%	71.16%	71.00%	63.02%	60.16%	0.12%
Blue Shield of California (HMO/POS)	58.60%	65.00%	63.55%	64.73%	64.79%	66.33%	60.50%	1.90%
Chinese Community Health Plan (HMO)							86.86%	NA
Cigna Health Care (HMO/POS)	64.23%	64.00%	62.11%	62.11%	68.04%	68.04%	52.22%	-12.01%
Health Net of California, Inc. (HMO/POS)	62.23%	62.00%	63.11%	68.56%	65.82%	67.93%	65.03%	2.80%
Kaiser Permanente-North (HMO)	73.31%	74.00%	80.37%	80.37%	83.70%	87.08%	85.71%	12.40%
Kaiser Permanente-South (HMO)	73.97%	76.00%	79.08%	84.23%	83.70%	85.64%	85.64%	11.67%
Sharp Health Plan (HMO)						69.54%	67.78%	NA
United Healthcare (HMO)	53.81%	63.00%	66.75%	66.75%	66.83%	66.83%	64.10%	10.29%
Western Health Advantage (HMO)	60.83%	60.00%	63.99%	64.48%	68.61%	68.61%	70.80%	9.97%
National 90th Percentile			71.61%	72.68%	74.09%	76.16%	74.94%	3.33%
California Average			63.64%	69.44%	70.30%	70.81%	68.93%	5.29%
National Average			63.37%	64.09%	63.43%	65.36%	63.04%	-0.33%

Data provided by NCQA Quality Compass. All dates refer to the performance year.

Trend analysis provided by the UC Berkeley School of Public Health Right Care research team, October 2013

Heart Patients with Lipids Controlled (LDL-C<100)



Lipid Control (LDL-C<100) of Heart Patients Among CA Health Plans

	2006	2007	2008	2009	2010	2011	2012	Change
Aetna Health of California (HMO/POS)	61.16%	64.00%	60.53%	56.27%	59.62%	47.30%	62.26%	1.10%
Blue Cross (HMO/POS)	65.74%	69.00%	69.00%	70.56%	70.56%	64.66%	64.66%	-1.08%
Blue Shield of California (HMO/POS)	62.58%	66.00%	62.16%	59.56%	59.56%	59.62%	59.95%	-2.63%
Chinese Community Health Plan (HMO)							65.91%	NA
Cigna Health Care (HMO/POS)	64.48%	57.00%	60.55%	60.51%	60.51%	62.28%	62.28%	-2.20%
Health Net of California, Inc. (HMO/POS)	62.84%	65.00%	70.98%	69.87%	69.87%	67.40%	67.40%	4.56%
Kaiser Permanente-North (HMO)	66.04%	71.00%	72.84%	74.97%	74.17%	75.74%	78.04%	12.00%
Kaiser Permanente-South (HM))	62.53%	70.00%	69.13%	72.87%	74.41%	78.94%	76.72%	14.19%
Sharp Health Plan (HMO)						59.62%	65.23%	NA
United Healthcare (HMO)	56.84%	63.00%	66.01%	62.98%	62.98%	65.11%	65.11%	8.27%
Western Health Advantage (HMO)	59.87%	60.00%	60.44%	64.86%	64.86%	68.95%	68.95%	9.08%
National 90th Percentile			69.04%	69.63%	71.97%	73.06%	73.06%	4.02%
California Average			62.70%	65.83%	65.64%	64.96%	66.96%	4.26%
National Average			59.72%	59.16%	59.89%	59.84%	59.87%	0.15%

Data provided by NCQA Quality Compass. All dates refer to the performance year.

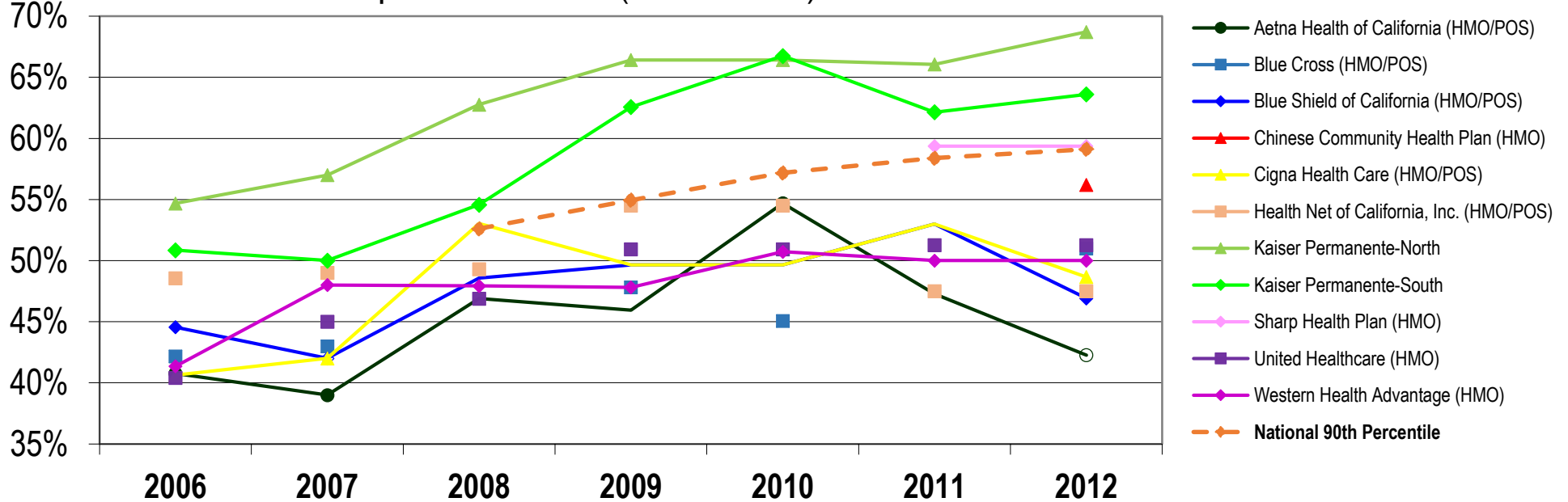
Trend analysis provided by the UC Berkeley School of Public Health Right Care research team, October 2013

Right Care Initiative: Key Quality Indicators for Cardiovascular Prevention Among California Health Plans

Trend analysis provided by the UC Berkeley School of Public Health Right Care research team, October 2013



Diabetic Patients with Lipids Controlled (LDL-C<100)



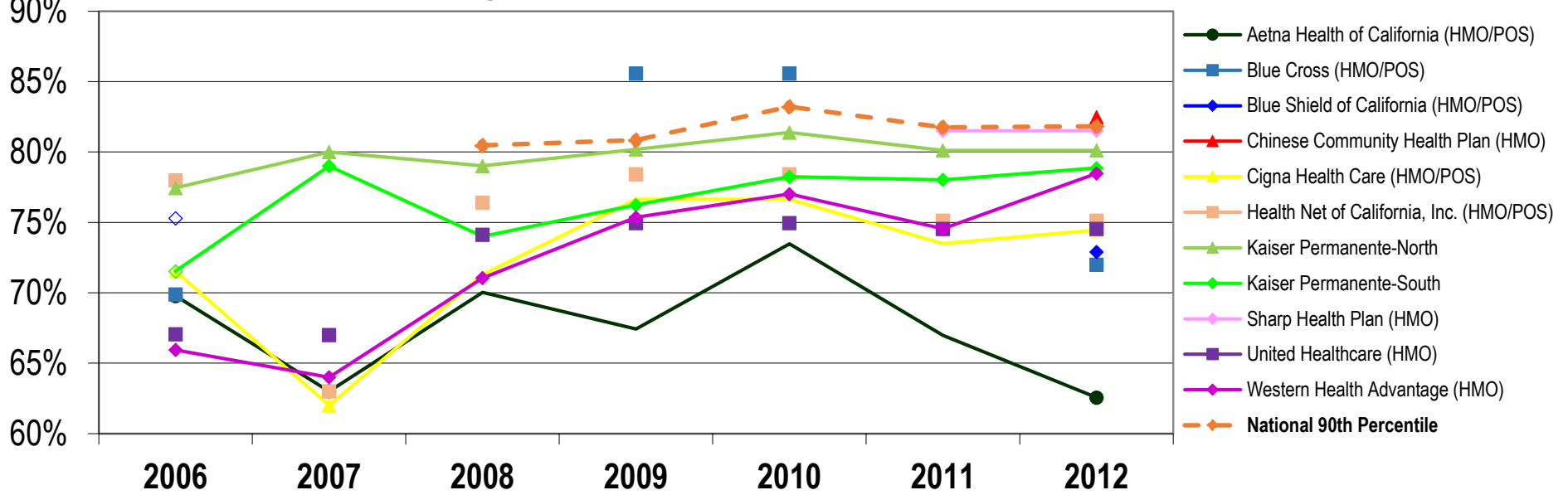
Lipid Control (LDL-C<100) of Diabetic Patients Among CA Health Plans

	2006	2007	2008	2009	2010	2011	2012	Change
Aetna Health of California (HMO/POS)	40.77%	39.00%	46.89%	45.95%	54.69%	47.27%	42.27%	1.50%
Blue Cross (HMO/POS)	42.17%	43.00%	53.86%	47.81%	45.07%	51.00%	51.00%	8.83%
Blue Shield of California (HMO/POS)	44.55%	42.00%	48.58%	49.64%	49.64%	52.99%	46.91%	2.36%
Chinese Community Health Plan (HMO)							56.20%	NA
Cigna Health Care (HMO/POS)	40.63%	42.00%	53.04%	49.64%	49.64%	53.00%	48.66%	8.03%
Health Net of California, Inc. (HMO/POS)	48.56%	49.00%	49.30%	54.50%	54.50%	47.51%	47.51%	-1.05%
Kaiser Permanente-North (HMO)	54.68%	57.00%	62.77%	66.42%	66.42%	66.06%	68.72%	14.04%
Kaiser Permanente-South (HMO)	50.85%	50.00%	54.58%	62.57%	66.75%	62.14%	63.61%	12.76%
Sharp Health Plan (HMO)						59.37%	59.37%	NA
United Healthcare (HMO)	40.42%	45.00%	46.88%	50.94%	50.94%	51.26%	51.26%	10.84%
Western Health Advantage (HMO)	41.36%	48.00%	47.93%	47.81%	50.73%	50.00%	50.00%	8.64%
National 90th Percentile			52.61%	54.95%	57.18%	58.39%	59.12%	6.51%
California Average			48.33%	52.81%	53.82%	54.06%	53.68%	5.35%
National Average			45.52%	47.04%	47.73%	48.08%	48.42%	2.90%

Data provided by NCQA Quality Compass. All dates refer to the performance year.

Trend analysis provided by the UC Berkeley School of Public Health Right Care research team, October 2013

Diabetic Patients with Blood Sugar Controlled (HbA1c<9)



	2006	2007	2008	2009	2010	2011	2012	Change
Aetna Health of California (HMO/POS)	69.78%	63.00%	70.02%	67.43%	73.47%	66.98%	62.56%	-7.22%
Blue Cross (HMO/POS)	69.88%	71.00%	75.50%	85.58%	85.58%	72.00%	72.00%	2.12%
Blue Shield of California (HMO/POS)	75.30%	64.00%	71.56%	75.91%	75.91%	73.68%	72.91%	-2.39%
Chinese Community Health Plan (HMO)							82.48%	NA
Cigna Health Care (HMO/POS)	71.53%	62.00%	71.29%	76.64%	76.64%	73.50%	74.45%	2.92%
Health Net of California, Inc. (HMO/POS)	77.99%	63.00%	76.40%	78.42%	78.42%	75.13%	75.13%	-2.86%
Kaiser Permanente-North (HMO)	77.45%	80.00%	79.01%	80.19%	81.39%	80.11%	80.11%	2.66%
Kaiser Permanente-South (HMO)	71.53%	79.00%	74.01%	76.24%	78.24%	78.02%	78.86%	7.33%
Sharp Health Plan (HMO)						81.51%	81.51%	NA
United Healthcare (HMO)	67.06%	67.00%	74.13%	74.96%	74.96%	74.55%	74.55%	7.49%
Western Health Advantage (HMO)	65.94%	64.00%	71.05%	75.36%	77.01%	74.55%	78.47%	12.53%
National 90th Percentile			80.46%	80.84%	83.21%	81.75%	81.82%	1.36%
California Average			71.34%	76.75%	77.95%	72.26%	75.73%	4.39%
National Average			71.64%	71.79%	72.68%	71.11%	71.53%	-0.11%

Data provided by NCQA Quality Compass. All dates refer to the performance year.
Trend analysis provided by the UC Berkeley School of Public Health Right Care research team, October 2013